

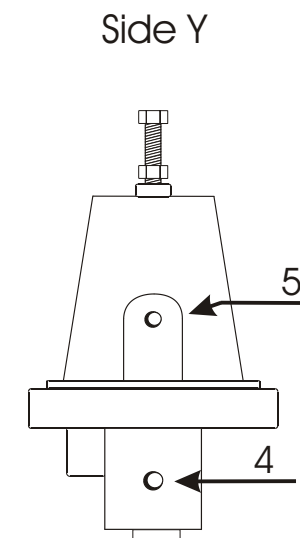
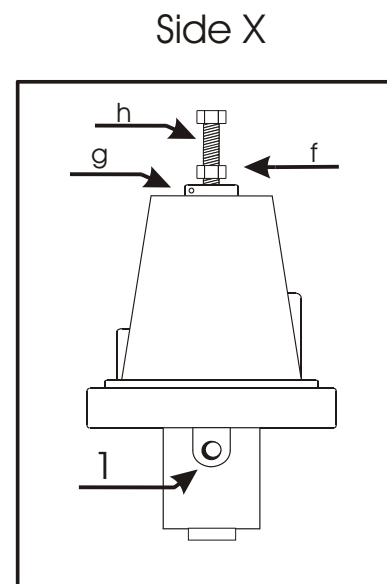
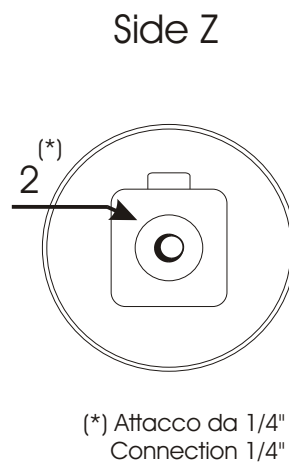
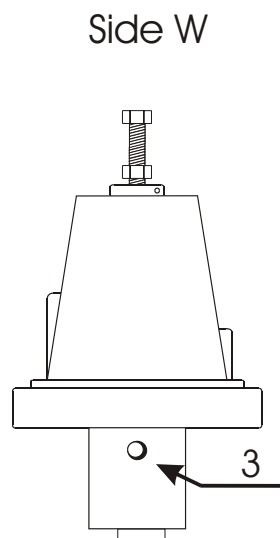
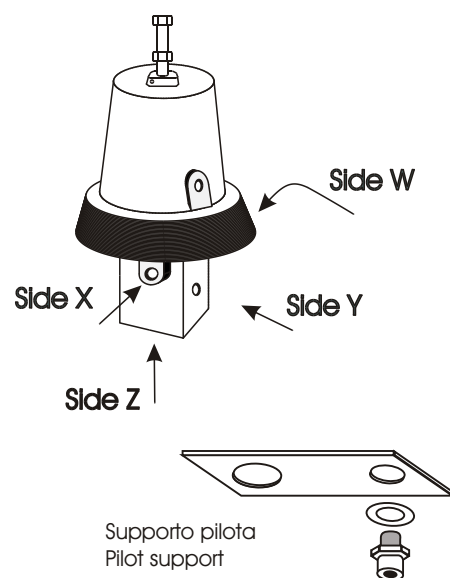
Lista componenti
Spare parts

- 1 - Tappo superiore - Upper plug
- 2 - Vite di taratura - Adjustment screw
- 3 - Coperchio - Cover
- 4 - Molla - Spring
- 5 - Vite di blocco - Locking screw
- 6 - Supporto molla - Spring support
- 7 - Membrana - Diaphragm
- 8 - Guarnizione - Joint
- 9 - Stelo - Stem
- 10 - O-ring superiore - Upper O-ring
- 11 - O-ring centrale - Central O-ring
- 12 - O-ring inferiore - Lower O-ring
- 13 - Pistone - Piston
- 14 - Filtro - Strainer
- 15 - Dado di bloccaggio - Locking nut
- 16 - Corpo - Body
- 17 - Tappo manometro - Pressure gauge plug
- 18 - Tappo inferiore - Lower plug



PILOTA A 3 VIE - 3 WAYS PILOT

Riduzione Pressione - Sostegno Pressione - Controllo Portata
Pressure Reducing - Pressure Sustaining - Rate of Flow



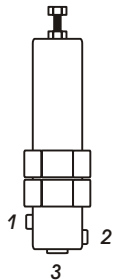
RIDUZIONE PRESSIONE PRESSURE REDUCING	
1	P di valle - <i>Downstream P</i>
2	P di monte - <i>Upstream P</i>
3	Scarico - <i>Discharge</i>
4	Comune - <i>Common</i>
5	Assente - <i>Absent</i>

SOSTEGNO PRESSIONE PRESSURE SUSTAINING	
1	P di monte - <i>Upstream P</i>
2	Scarico - <i>Discharge</i>
3	P di monte - <i>Upstream P</i>
4	Comune - <i>Common</i>
5	Assente - <i>Absent</i>

CONTROLLO PORTATA RATE OF FLOW	
1	P di valle - <i>Downstream P</i>
2	P di monte - <i>Upstream P</i>
3	Scarico - <i>Discharge</i>
4	Comune - <i>Common</i>
5	P Orifizio - <i>Orifice P</i>

LEGENDA
LEGEND

- f** = Dado di bloccaggio
Locking nut
- g** = Foro di piombatura
Leading hole
- h** = Vite di regolazione
Adjusting screw



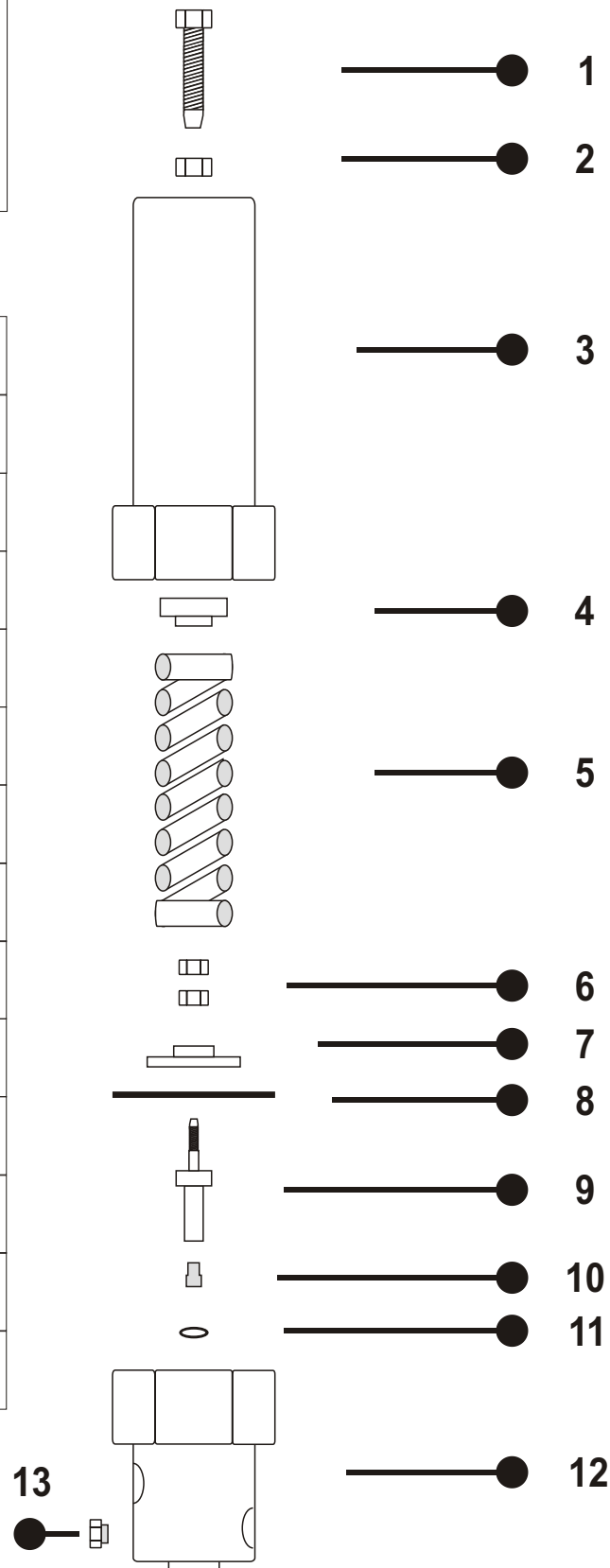
Connessioni Pilota / Pilot Connection

- 1 = Pressione di monte / Upstream pressure
- 2 = Pressione di valle / Downstream pressure
- 3 = Coperchio valvola / Valve Chamber

Compi di regolazione Pilota / Pilot Regulation Range

- Molla blu / Blue spring = 1 - 6 bar
- Molla rossa / Red spring = 6 - 12 bar

ITEM	DESCRIZIONE Description	MATERIALI Materials
1	Vite di taratura Adjustment screw	Acciaio Inox Stainless Steel
2	Dado di bloccaggio Locking nut	Acciaio Inox Stainless Steel
3	Corpo superiore Upper body	Ottone Brass
4	Spingimolla Spring's retainers	Ottone Brass
5	Molla Spring	Acciaio Inox Stainless Steel
6	Dadi di bloccaggio Locking nuts	Acciaio Inox Stainless Steel
7	Support membrana Diaphragm retainer	Ottone Brass
8	Membrana Diaphragm	NBR rinforzata nylon NBR nylon reinforced
9	Stelo Stem	Acciaio Inox Stainless Steel
10	Tenuta Seal	Teflon Teflon
11	Anello di tenuta O-Ring	NBR NBR
12	Corpo inferiore Body plug	Ottone Brass
13	Orifizio calibrato Calibrated orifice	Acciaio Carbon Steel



MINIPILOTA 3 VIE RP3/SP3/QP3

3 WAY MINIPILOT RP3/SP3/QP3
 MINIPILOTO DE 3 VIAS RP3/SP3/QP3
 MINIPILOTE 3 VOIES RP3/SP3/QP3

CARATTERISTICHE GENERALI - GENERAL FEATURES - CARACTERISTICAS GENERALES - CARACTERISTIQUES GENERALES

RP3B/RP3P

Riduttore di Pressione
 Pressure Reducing
 Reductor de Presión
 Réducteur de Pression

SP3B/SP3P

Sostegno di Pressione
 Pressure Sustaining
 Sostenedor de Presión
 Mainteneur de Pression

QP3B/QP3P

Regolatore di Portata
 Flow Rate Regulating
 Limitador de caudal
 Régulateur de Débit

B

Corpo Metallico
 Metallic Body
 Cuerpo Metálico
 Corps Métallique

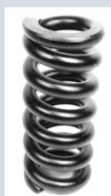


P

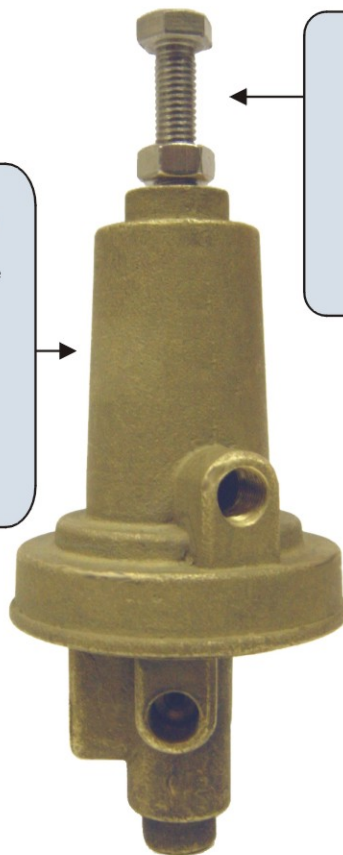
Corpo Plastica
 Plastic Body
 Cuerpo Plástico
 Corps Plastique



Molla intercambiabile
 Interchangeable spring
 Muelle intercambiabile
 Ressort interchangeable

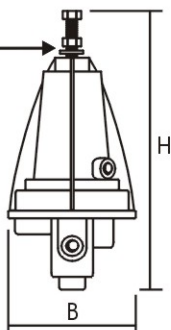
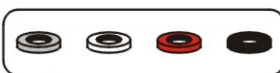


Vite di regolazione
 Adjustment screw
 Tornillo de ajuste
 Vis de réglage



CARATTERISTICHE TECNICHE - TECHNICAL FEATURES - CARACTERISTICAS TECNICAS - CARACTERISTIQUES TECHNIQUES

Rondella di identificazione
 Identification washer
 Arandela de identificación
 Rondelle d'identification



Colore Colour Color Couleur	Grigio Grey Gris Gris	Bianco White Blanco Blanc	Rosso Red Rojo Rouge	Nero Black Negro Noir
Durezza - Hardness Dureza - Dureté		-		
Pressioni di esercizio Working pressures Presiones de trabajo Pressions de service	P Min. 0.5 (bar) / 7.3 (psi) Max. 10.0 (bar) / 145.0 (psi)	B Min. 0.5 (bar) / 7.3 (psi) Max. 16.0 (bar) / 232.0 (psi)		
Campi di regolazione Regulation ranges Rangos de regulación Plages de régulation	0.2 ÷ 1.5 (bar) 2.9 ÷ 21.7 (psi)	0.2 ÷ 3.0 (bar) 2.9 ÷ 43.5 (psi)	1.0 ÷ 5.5 (bar) 14.5 ÷ 79.8 (psi)	1.0 ÷ 9.0 (bar) 14.5 ÷ 130.5 (psi)
Sensibilità Sensitivity Sensibilidad Sensibilité	± 0.2 (bar) ± 2.9 (psi)	± 0.2 (bar) ± 2.9 (psi)	± 0.2 (bar) ± 2.9 (psi)	± 0.1 (bar) ± 1.5 (psi)
Peso Weight Peso Poids	P 0.5 (kg) 1.1 (lbs)	B 0.8 (kg) 1.76 (lbs)		
Dimensioni Dimensions Dimensiones Dimensions	H = 122.0 (mm)		B = 62.0 (mm)	